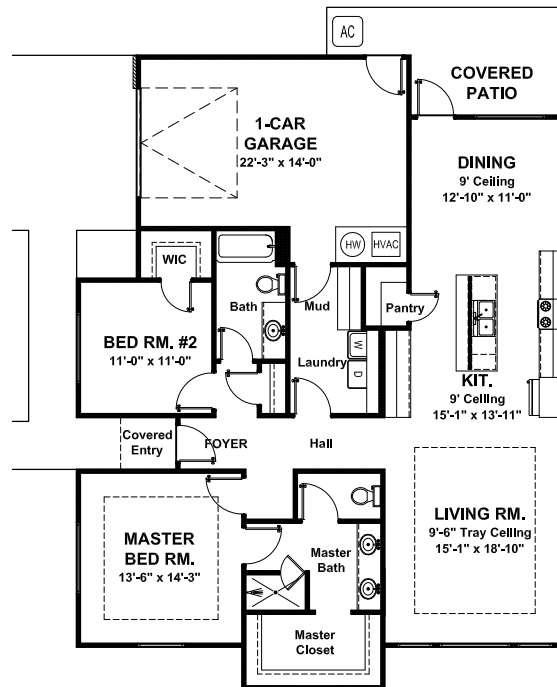




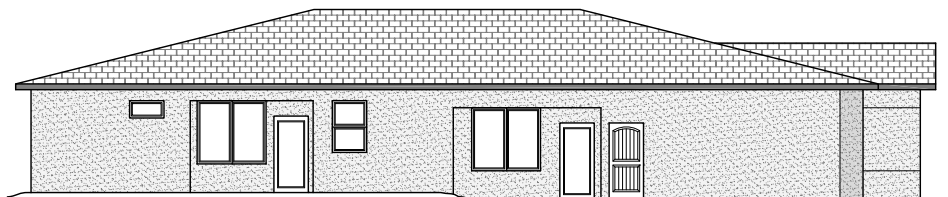
Living Area = ..... 1,515 Sq. Ft.  
Garage = ..... 353 Sq. Ft.  
Covered Entry = ..... 20 Sq. Ft.  
Covered Patio = ..... 67 Sq. Ft.  
Dimensions = ..... 77'-6" (w) x 52'-10" (d)  
FNDN: Slab                      Exterior Walls: 2x4

**Style: Modern - 2 Bedroom - 2 Bath - 1 Car Garage**

This single family attached home with its modern exterior provides two-toned stucco and varied shed roofs. The open concept allows for a defined living, kitchen, and dining room accented with tray ceilings. Enjoy the extra storage in the mud, pantry or laundry room and large master walk in closet. Fall in love with the covered patio to finish the home's functionality.



**HALO- A**



**Rear Elevation**