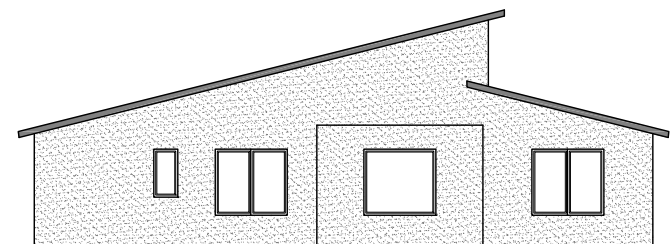
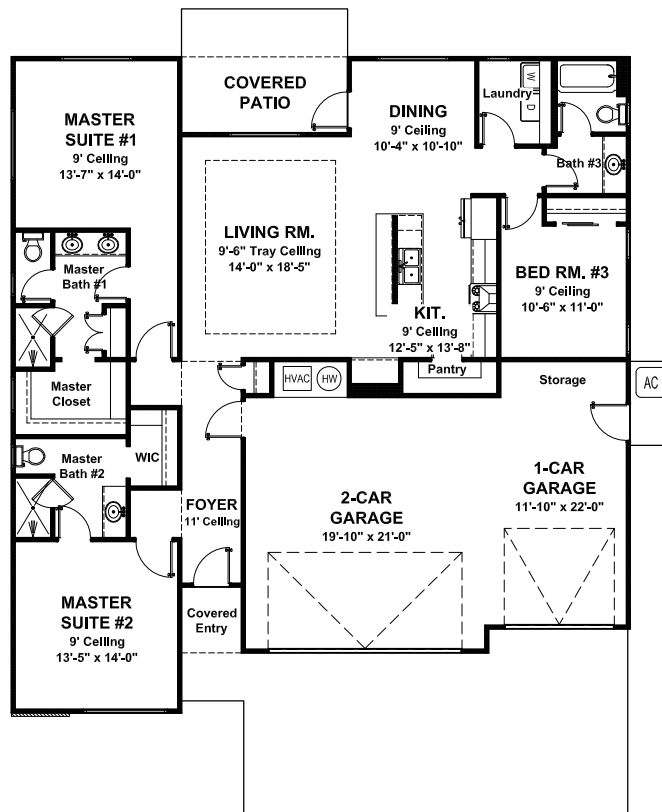




Main Living Area = 1,783 Sq. Ft.
 Garage = 709 Sq. Ft.
 Covered Entry = 27 Sq. Ft.
 Covered Patio = 88 Sq Ft.
 Dimensions = 51'-7" (w) x 54'-8" (d)
 FNDN: Slab Exterior Walls: 2x4

Style: Modern - 3 Bedroom - 3 Bath - 3 Car Garage

This attractive modern home features clean lines and a bold look. Built for functionality this smart layout has a small footprint but is very open. Inside there are 2 master suites with attached full bath and walk-in closets as well as a secondary bedroom. A 3-car garage provides storage needs and room for a shop.



Back Elevation