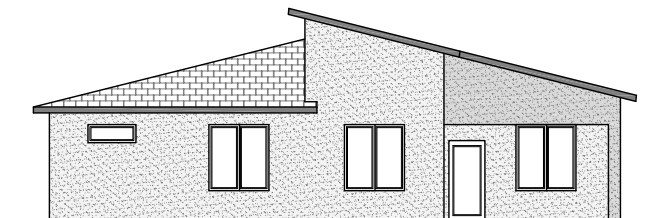
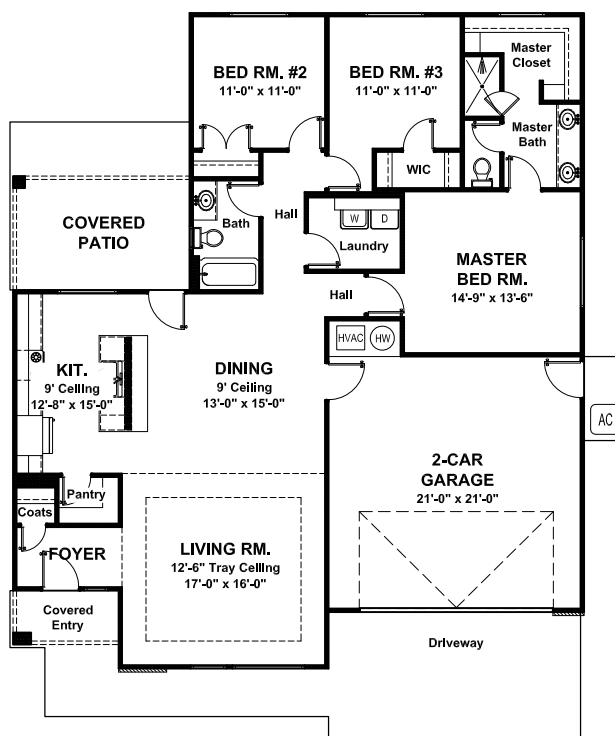




Main Living Area = ..... 1,631 Sq. Ft.  
Garage = ..... 471 Sq. Ft.  
Covered Entry = ..... 40 Sq. Ft.  
Covered Patio = ..... 140 Sq Ft.  
Dimensions = ..... 47'-7" (w) x 54'-8" (d)  
FNDN: Slab                      Exterior Walls: 2x4

**Style: Modern - 3 Bedroom - 2 Bath - 2 Car Garage**

A distinctive modern home with an exterior that is rivaled by the interior. Through the foyer a large living room is complete with a 12'-6" tray ceiling lit with large windows. The living, kitchen and dining are all central to your bedroom spaces. The master suite has a gorgeous bath and spacious walk-in closet. This plan is finished with a covered patio and a covered entry, set for unwinding from your day.



**Back Elevation**