



BOA BUILDERS
970-986-1159

www.boabuilders.com
boabuilders@gmail.com

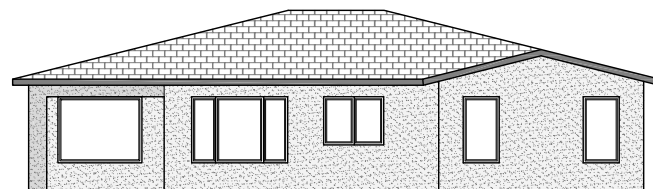
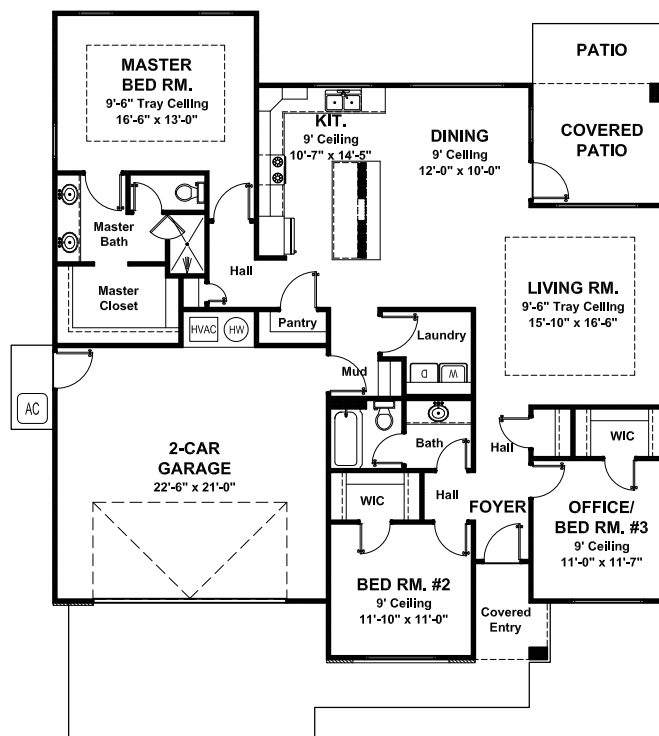
Plan: #U1348
SILHOUETTE-A



Main Living Area = 1,746 Sq. Ft.
Garage = 503 Sq. Ft.
Covered Entry = 43 Sq. Ft.
Covered Patio = 113 Sq Ft.
Dimensions = 51'-3" (w) x 54'-0" (d)
FNDN: Slab Exterior Walls: 2x4

Style: Modern - 3 Bedroom - 2 Bath - 2 Car Garage

This clean contemporary plan has a large shed roof accentuating the entry. Two toned stucco with control joints really highlight the signature style of this home. Interior spaces are roomy and functional. The spacious master suite is split from the secondary bedrooms allowing privacy and space. The master suite features a tray ceiling while all bedrooms provide walk-in closets. Settle in to comfortable living on your covered patio off the dining room.



Back Elevation