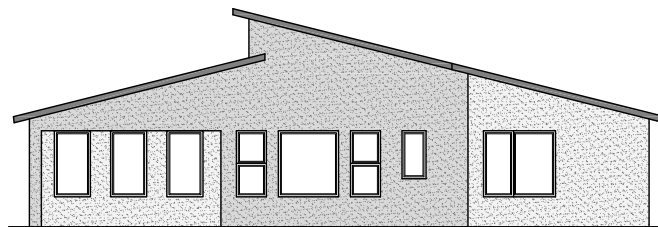
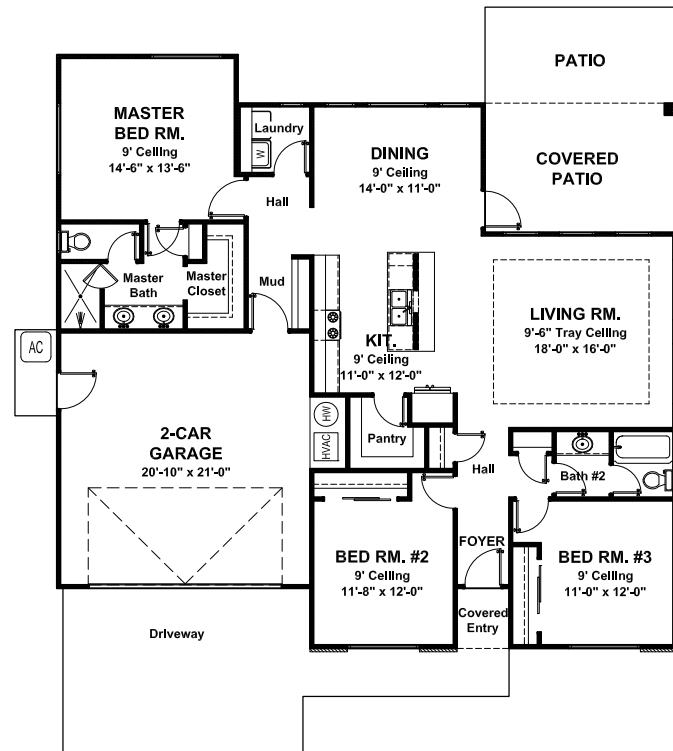




Main Living Area = 1,640 Sq. Ft.
 Garage = 467 Sq. Ft.
 Covered Entry = 21 Sq. Ft.
 Covered Patio = 171 Sq. Ft.
 Dimensions = 51'-8" (w) x 59'-9" (d)
 FNDN: Slab Exterior Walls: 2x4

Style: Modern - 3 Bedroom - 2 Bath - 2 Car Garage

This spacious contemporary design with 2 bedrooms has all the amenities for modern living. A tray ceiling really accentuates the living room while the kitchen has a nice walk-in pantry and lots of cabinet space. The spacious master suite and bath is separated from the secondary bedrooms allowing for privacy and luxury. The large covered patio is perfect for entertaining and relaxing.



Back Elevation